



# THE TOWNES AT BISHOPS PARK



## TOWNHOME LIVING AT FLETCHER PARK



Discover The Townes at Bishops Park – Your New Home in Raleigh

Nestled in the I-440 Beltline, where Glenwood and Wade Avenue meet, lies The Townes at Bishops Park. These charming Williamsburg-style brick townhomes offer a level of seclusion and comfort that's hard to find in other garden-style communities.

Located in the heart of Raleigh's renowned Bishops Park, residents can enjoy a leisurely stroll to Fletcher Park, or explore the endless dining and shopping options available in the Village District and Glenwood South. Plus, living here means you never have to compromise on convenience.

## PROPERTY SPECIFICATION



2 bedrooms



2.5 bathrooms



Pet Friendly



Swimming Pool



Adjacent to Fred Fletcher Park

## CONTACT US TODAY

+919 791 3600

519-525 Wade Ave, Raleigh, NC 27605

[www.townesatbishopsark.com](http://www.townesatbishopsark.com)

**Leasing Office located in Sojourn  
Glenwood Place**

3710 Exchange Glenwood Pl. Ste 1000  
Raleigh, NC 27612



# THE TOWNES AT BISHOPS PARK

## AMENITIES



- 1,188 SF Townhome
- 2 Bedroom/ 2.5 Bathroom Townhome
- Enclosed Terrace
- Stainless Steel Appliances in select units
- Combination Hardwood & Luxury Vinyl Tile Flooring
- Two primary bedrooms
- Laundry Care Center on Site
- Adjacent to Fletcher Park
- Saltwater Swimming Pool
- Grilling Area
- Pet Friendly\*

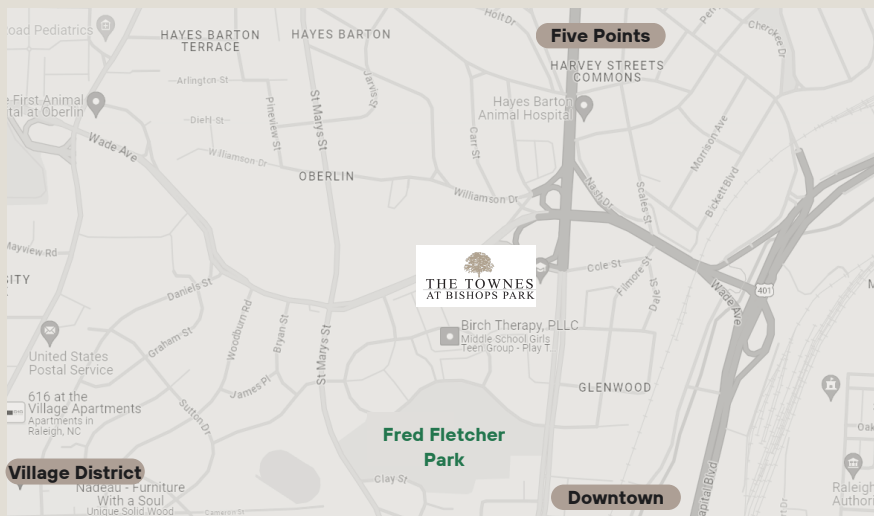
## FEES & DEPOSITS+



- Application Fee: \$50 per application
- (or \$75 per married couple)
- Administrative Fee: \$100
- Security Deposit: \$300 based on credit approval
- Pet Fee: \$200 nonrefundable.
- Monthly pet rent: \$20 per pet/ 2 pet limit\*

\*See pet policy for details.

+Pricing and availability subject to change.



## CONTACT US TODAY

- +919 791 3600
- 519-525 Wade Ave, Raleigh, NC 27605
- [www.townesatbishopsark.com](http://www.townesatbishopsark.com)

**Leasing Office located in Sojourn  
Glenwood Place**  
3710 Exchange Glenwood Pl. Ste 1000  
Raleigh, NC 27612



# THE TOWNES AT BISHOPS PARK



 LOWER LEVEL




 UPPER LEVEL

TOWNHOME: 1,188 SF  
2 BEDROOMS  
2.5 BATHS



**CONTACT US**  
**919-791-3600**

 [townesatbishopsparke@grubbventures.com](mailto:townesatbishopsparke@grubbventures.com)

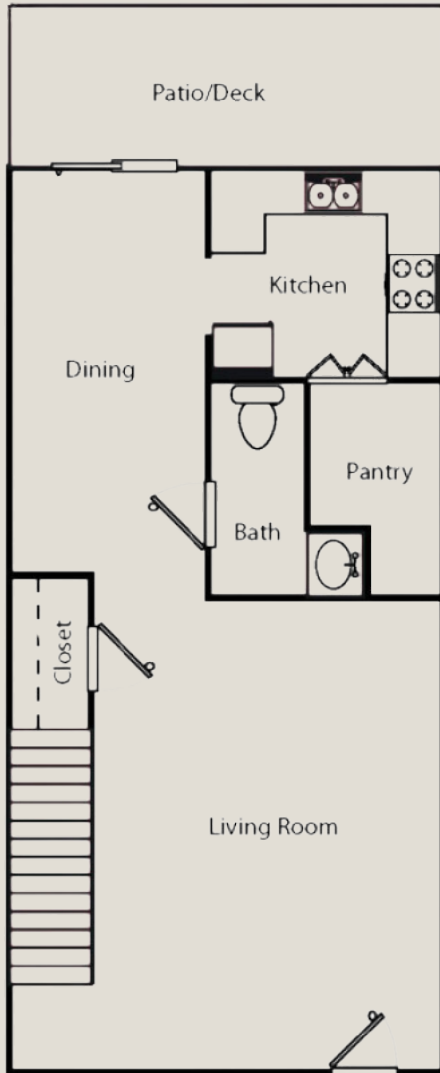
 [www.townesatbishopsparke.com](http://www.townesatbishopsparke.com)

 **OUR LEASING OFFICE:**

Sojourn Glenwood Place  
3710 Exchange Glenwood Pl. Ste 1000  
Raleigh, NC 27612

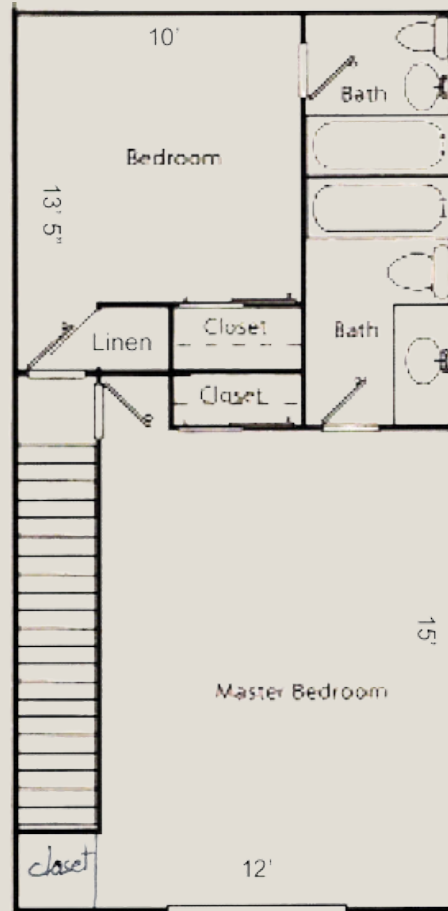


# THE TOWNES AT BISHOPS PARK



\*Regular size W/D will fit in the pantry area.

LOWER LEVEL



UPPER LEVEL

TOWNHOME: 1,188 SF  
2 BEDROOMS  
2.5 BATHS



**CONTACT US**  
919-791-3600

townesatbishopsparke@grubbventures.com

www.townesatbishopsparke.com

**OUR LEASING OFFICE:**

Sojourn Glenwood Place  
3710 Exchange Glenwood Pl. Ste 1000  
Raleigh, NC 27612